

TL/TL-NET LTR[®] Trunking Controllers

The TL and TL-NET LTR dispatch controllers are the smallest and simplest LTR controllers on the market. Each controller is the size of a **3 X 5 card** and three can be placed side-by-side in a 1U chassis, saving valuable rack space.

Easily interfaces to any repeater on the market!



KEY FEATURES of Both Models:

- LTR Dispatch. 20 repeaters per system, 250 group IDs per controller.
- Program and test all parameters from the innovative Windows[®]-based Control Manager software. (See back side for details.)
- Air time logging and real-time system monitoring.
- ID validation. If group ID is invalid, handshake will not complete.
- Built-in CWID.
- Valid repeater array – Each controller has its own list of approved controllers. Safely trunk calls to valid repeaters which allows for staged system/fleet upgrades.
- Remote programming/maintenance via DTMF.
- Conventional operation supported.
- TL version firmware upgradable to TL-NET.

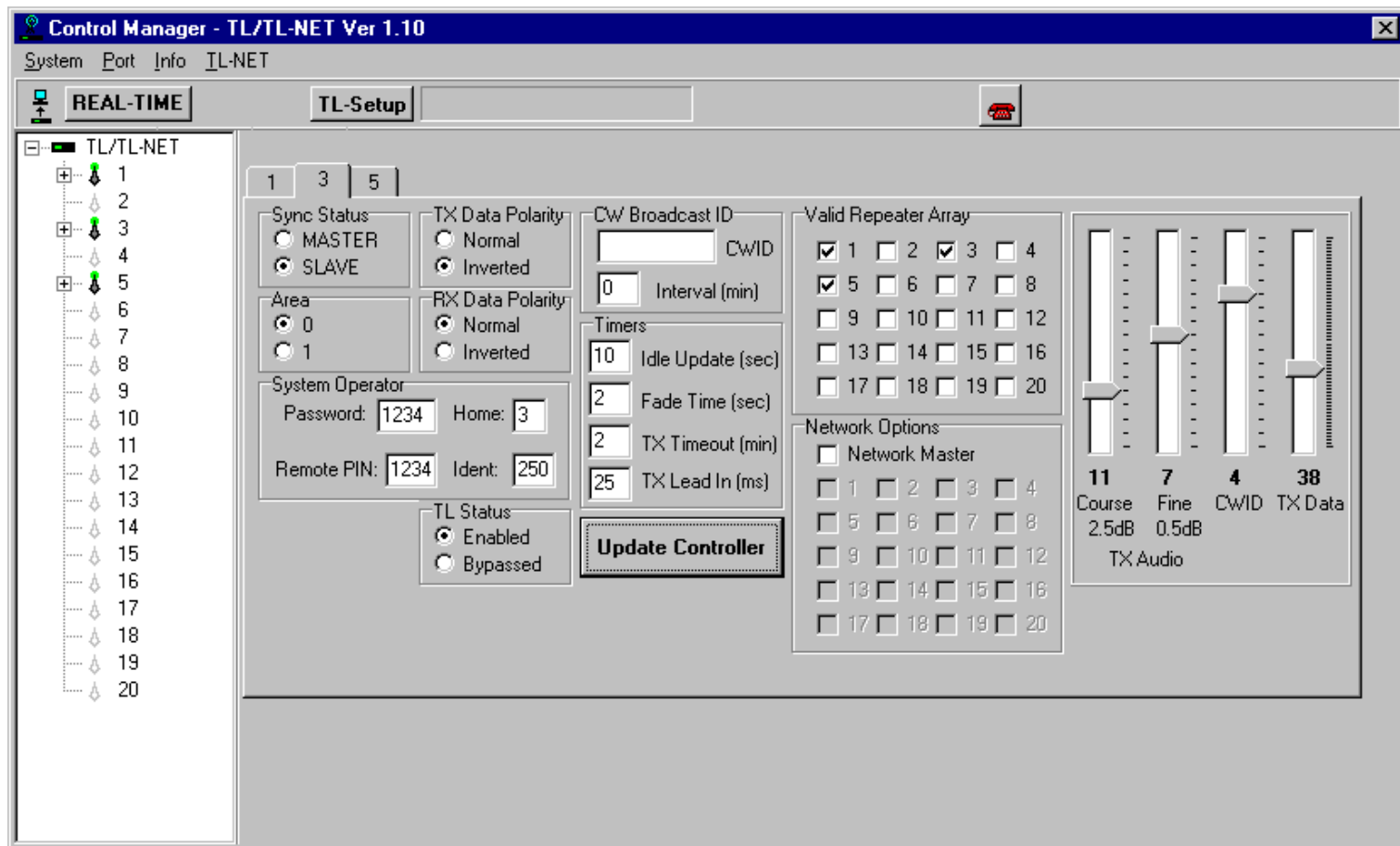
TL-NET LTR Controller Specific:

The TL-NET version allows for interfacing your LTR controllers to the TL-NET wide-area trunking system. The TL-NET system allows multiple repeater sites to be linked together, creating a wide-area trunking network. Visit www.BridgeComSystems.com for further details about TL-NET!

CONTROL MANAGER Software:

Our innovative Windows®-based Control Manager software allows you to setup, program, and test the many LTR® controller parameters quickly and easily:

- Area Bit, SYNC Status, RX and TX Data Polarity, Repeater Number
- Password, SYSOP Home/IDENT, Remote PIN
- Validation Tables
- TX Audio, TX Data, and CWID Levels
- Idle Message Update Timer, Fade Timer, TX Timeout Time, and TX Data Lead In Delay



SPECIFICATIONS for Both Models:

- Transmit Audio – 0-2.5 V pk-pk
- Receive Audio – 0-5 Volts
- Transmit Data – 0-2.5 V pk-pk
- PTT Output – Open Drain Pull to Ground
- COR Input 5V Active Low
- Repeater and Control Bus – RJ45
- TL-NET Audio Bus – RJ45

BridgeCom
SYSTEMS

BridgeCom Systems, Inc.
617 Liberty Road
Smithville, MO 64089
816.532.8451
www.BridgeComSystems.com